



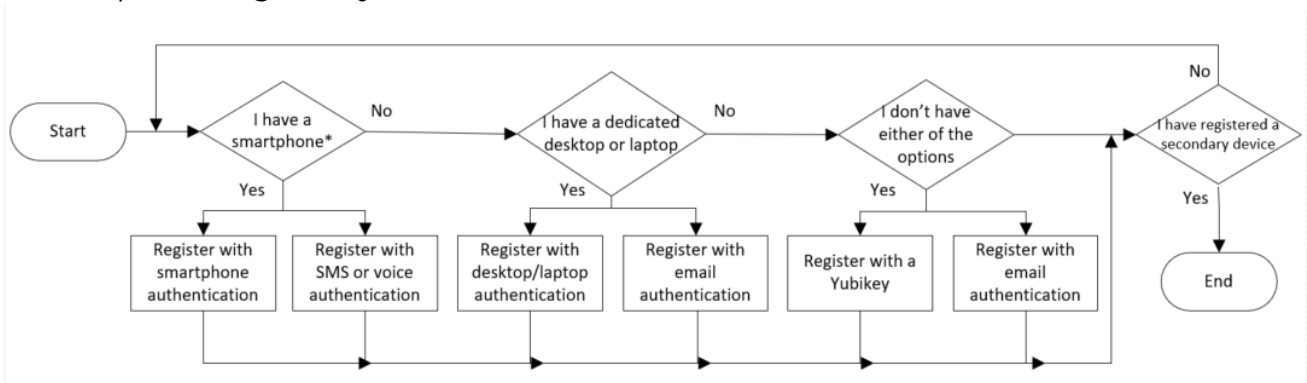
A Guide to Registering Your Devices for Multifactor Authentication (MFA)

CSL's Cybersecurity team has introduced multifactor authentication (MFA), a security measure that requires you use multiple types of information to log into a system or network to verify that the person logging in is really *you*.

Ping ID is the tool that CSL uses to support MFA. Anyone who accesses CSL devices, networks, or systems is required to register for MFA using the Ping ID tool.

What devices can be registered for MFA, and which should I choose?

There are several ways you can register for MFA. Use the chart below to help determine which option is right for you.



** You do not have to use your personal smartphone. It is at your discretion, as other options are available.*

We highly encourage you to register a minimum of two devices. This ensures you have a backup device enabled with MFA in the event you are not able to access your primary device.

How do I register for MFA ?

There are many helpful guides and resources available to help you register for MFA. Choose the guide below that corresponds with your devices and follow the simple steps to get your primary and backup devices registered today!



[Register your smartphone](#)



[Register your email](#)



[Register for SMS or voice authentication](#)



[Register your Yubikey](#)



[Register your desktop](#)



[Add a secondary device](#)